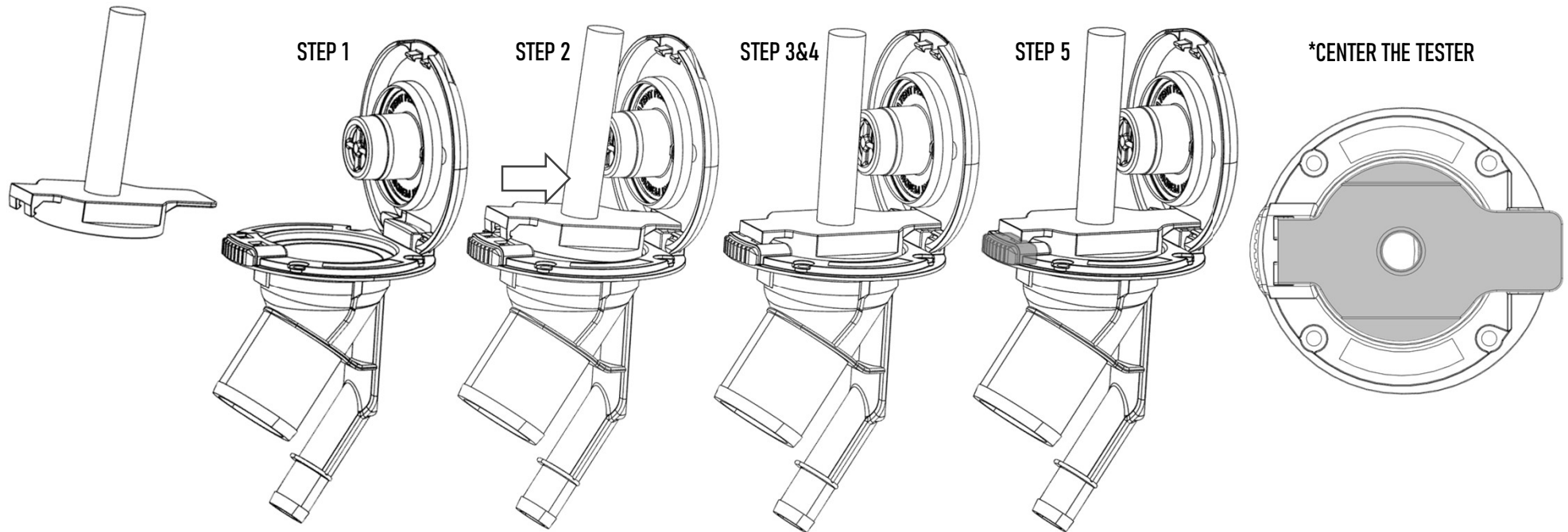


Installation Instructions

999DFTESTER

BIG DOG
Marine LLC



INSERTION AND TEST

1. Open deck fill cover to 90° and locate gap between cover and body.
2. Insert tester into gap with cover remaining at full open. Push as far rearward as possible.
3. Depress front edge of plug to engage with button and lock into position. *Make sure tester is centered inside deck fill opening.
4. Apply air pressure and conduct leak testing as required.

REMOVAL

5. After completion of test, relive air pressure and depress button to remove tester in reverse order.



BIG DOG MARINE LLC
www.bigdogmarinellc.com